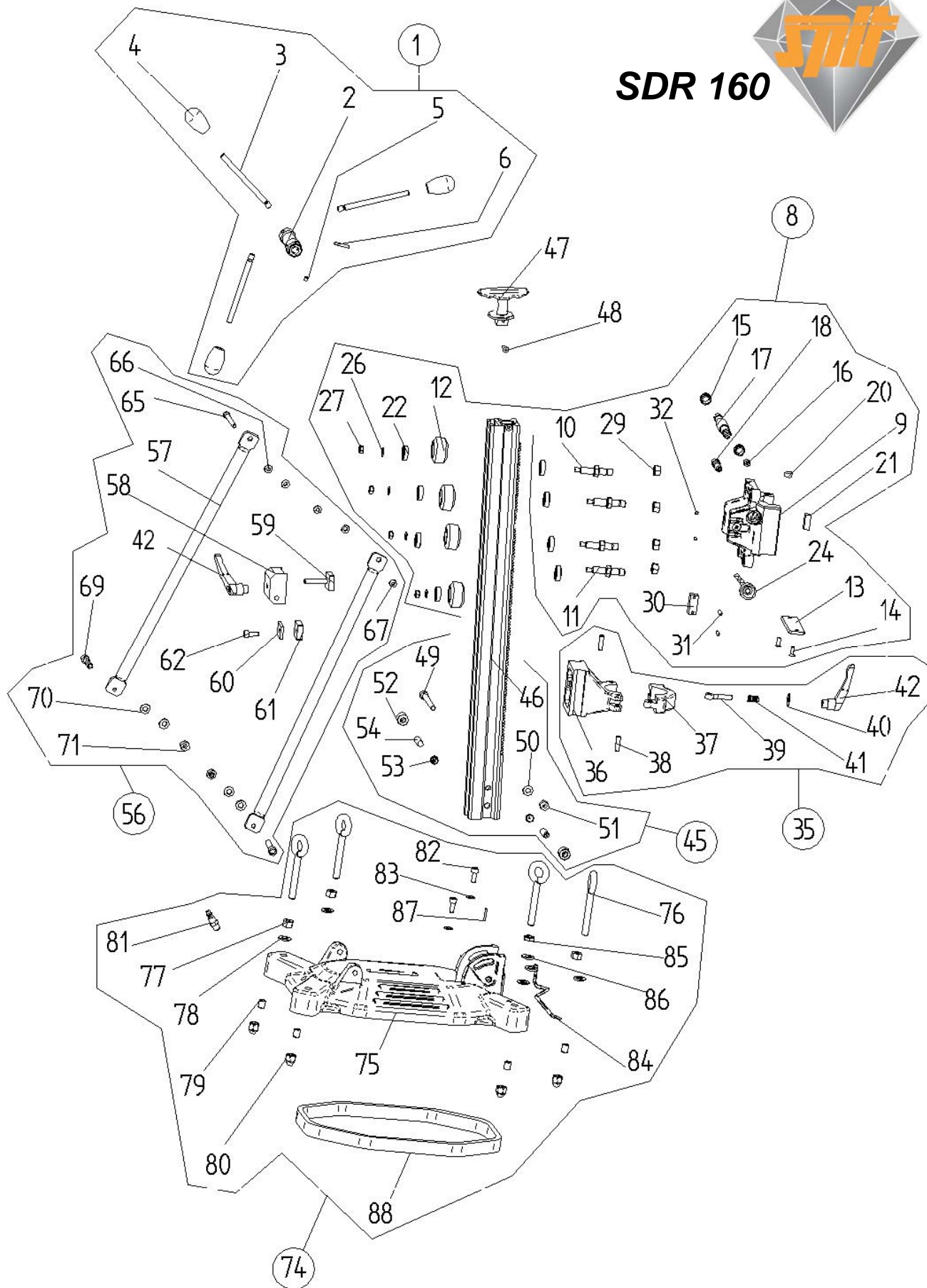




SDR 160



Mark plan	SPIT code	Article
1	623300	Hand wheel kit
2	623301	Hand wheel
3	623302	Lever
4	623303	Button GN 7911
5	623304	Elastic bolting
6	623305	Cylinder pin Ø5x28 DIN 6325
8	623306	Trolley kit SDR 130/160
9	623307	Trolley SDR 130/160
10	623308	Concentric roller
11	623309	Eccentric roller
12	623310	Roller SDR 130/160
13	623311	Metal support plate dovetail
14	623312	Conical screw M6x20 DIN 7985
15	623313	Steel muff
16	623323	Support muff clamping bolt Ø12x10 DIN 179A
17	623314	Axle hand wheel - trolley SDR 130/160
18	623315	Clamping bolt dovetail
20	623316	Vertical spirit level D14
21	623317	Horizontal spirit level H29
22	623318	Grooved ball bearing 6001 2RS
24	623319	Brake button M8x25
26	623320	Washer Ø8.4 DIN 125, ZN
27	623321	Hexagonal nut M8 DIN 985
29	623322	Hexagonal nut M12 DIN 985
30	623324	Brake block
31	623325	Axle brake block Ø5x24 DIN 6325
32	623326	Clamping screw steel muff M5x5 DIN 916, ZN
35	623327	Adaptor motor assembly kit SDR 130/160
36	623328	Adaptor motor assembly SDR 130/160
37	623329	Clamping brace motor
38	623330	Notched axle Ø8x30 DIN 1472
39	623331	Eye screw for lever M8-1 inside screw thread
40	623332	Washer Ø9 DIN 440
41	623333	Pressure spring for lever
42	623334	Lever M8x1 inside screw thread
45	623365	Column kit SDR 160
46	623366	Column SDR 160 with graduation
47	623337	Handle
48	623338	Screw handle M6x20 DIN 964
49	623367	Cylinder screw M10x80 DIN 912
50	623356	Washer Ø10.5 DIN 125, ZN
51	623348	Hexagonal nut M10 DIN 985
52	623368	Counter nut SDR 160
53	623369	Cone for column SDR 160 / SDR 350
54	623370	Joint bolt M12x35 DIN 913
56	623371	Column support kit
57	623372	Column support
58	623373	Fixing block supports
59	623342	Fixing support lock
60	623345	Clamping block 90° - outside
61	623346	Clamping block 90° - inside
62	623344	Cylinder screw M8x20 DIN 912
65	623347	Cylinder screw M8x70 DIN 912
66	623364	Washer Ø8.4 DIN 9021 plast
67	623322	Hexagonal nut M12 DIN 985

69	623375	Cylinder screw M10x40 DIN 912
70	623350	Washer Ø10.5 DIN 9021 plast
71	623348	Hexagonal nut M10 DIN 985
74	623376	Base plate kit
75	623377	Base plate SDR 160
76	623378	Setscrew M12x85
77	623379	Hexagonal nut M12 DIN 934
78	623380	Washer Ø 13 DIN 125, ZN
79	623381	Helicoil M12x24
80	623382	Screw protection nut M12 DIN 1587
81	623383	Pipe coupling G 1/4"
82	623384	Cylinder screw M8x20 DIN 912
83	623320	Washer Ø8.4 DIN 125, ZN
84	623385	Centre pin
85	623386	Flat hexagonal nut M12 DIN 936
86	623387	Washer Ø13 DIN 9012 plast
87	623388	Cylinder pin Ø4x20 DIN 7
88	623389	Rubber