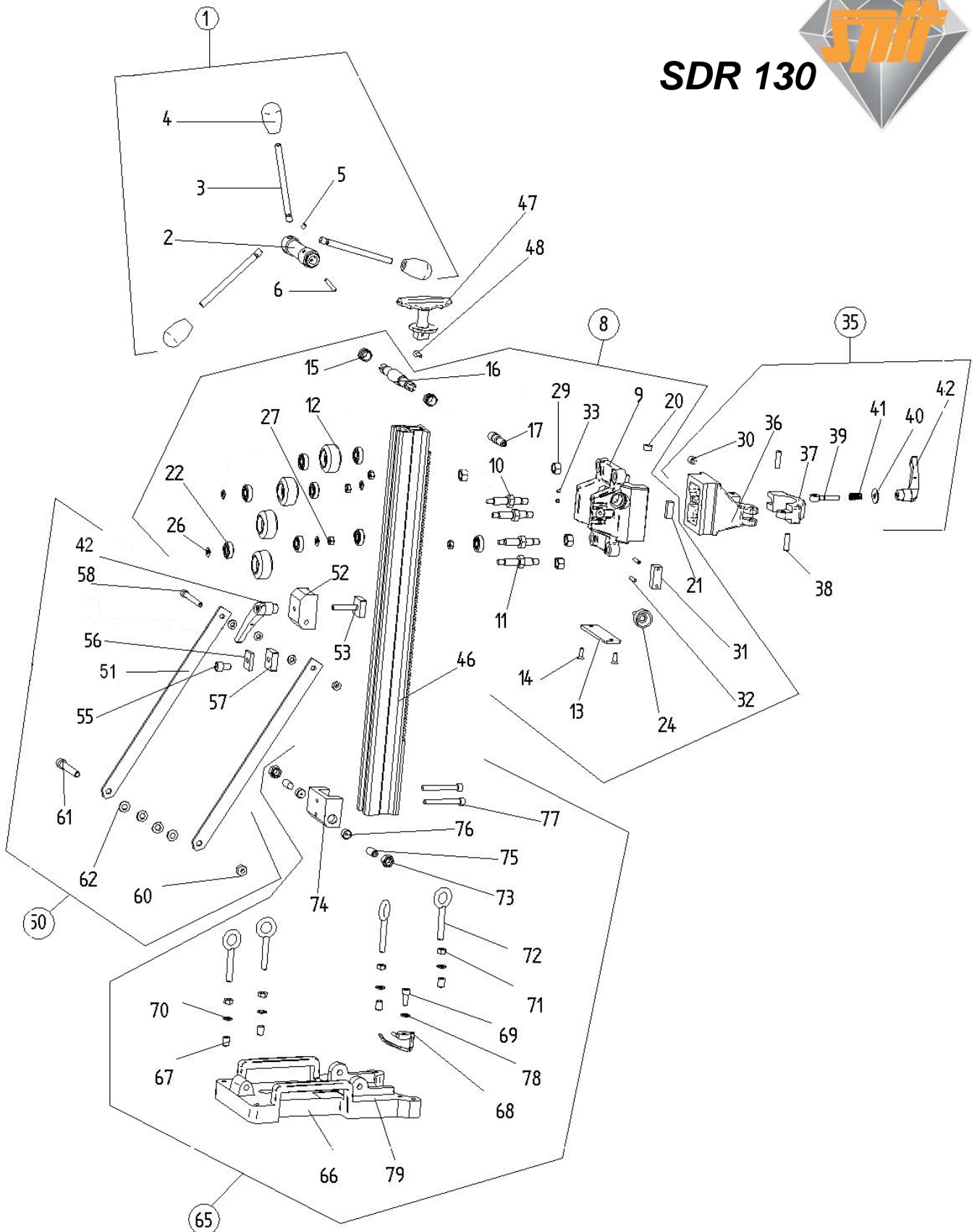




SDR 130



Mark plan	SPIT code	Article
1	623300	Hand wheel kit
2	623301	Hand wheel
3	623302	Lever
4	623303	Button GN 7911
5	623304	Elastic bolting
6	623305	Cylinder pin Ø5x28 DIN 6325
8	623306	Trolley kit SDR 130/160
9	623307	Trolley SDR 130/160
10	623308	Concentric roller
11	623309	Eccentric roller
12	623310	Roller SDR 130/160
13	623311	Metal support plate dovetail
14	623312	Conical screw M6x20 DIN 7985
15	623313	Steel muff
16	623314	Axle hand wheel - trolley SDR 130/160
17	623315	Clamping bolt dovetail
20	623316	Vertical spirit level D14
21	623317	Horizontal spirit level H29
22	623318	Grooved ball bearing 6001 2RS
24	623319	Brake button M8x25
26	623320	Washer Ø8.4 DIN 125, ZN
27	623321	Hexagonal nut M8 DIN 985
29	623322	Hexagonal nut M12 DIN 985
30	623323	Support muff clamping bolt Ø12x10 DIN 179A
31	623324	Brake block
32	623325	Axle brake block Ø5x24 DIN 6325
33	623326	Clamping screw steel muff M5x5 DIN 916, ZN
35	623327	Adaptor motor assembly kit SDR 130/160
36	623328	Adaptor motor assembly SDR 130/160
37	623329	Clamping brace motor
38	623330	Notched axle Ø8x30 DIN 1472
39	623331	Eye screw for lever M8-1 inside screw thread
40	623332	Washer Ø9 DIN 440
41	623333	Pressure spring for lever
42	623334	Lever M8x1 inside screw thread
45	623335	Column kit SDR 130
46	623336	Column SDR 130
47	623337	Handle
48	623338	Screw handle M6x20 DIN 964
50	623339	Column support kit SDR 130
51	623340	Column support SDR 130
52	623373	Fixing block supports
53	623342	Fixing support lock
55	623344	Cylinder screw M8x20 DIN 912
56	623345	Clamping block 90° - outside
57	623346	Clamping block 90° - inside
58	623347	Cylinder screw M8x70 DIN 912
60	623348	Hexagonal nut M10 DIN 985
61	623349	Cylinder screw M10x70 DIN 912
62	623350	Washer Ø10.5 DIN 9021 plast
65	623351	Base plate kit SDR 130
66	623352	Base plate SDR 130
67	623353	Helicoil M10
68	623354	Centre pin

69	623355	Cylinder screw M8x16 DIN 912
70	623356	Washer Ø10.5 DIN 125, ZN
71	623357	Hexagonal nut M10 DIN 934
72	623358	Setscrew base plate M10x80
73	623359	Hexagonal nut M12 DIN 985
74	623360	Base column foot plate SDR 130
75	623361	Joint bolt M12x30 DIN 913
76	623362	Base joint bolt SDR 130
77	623363	Cylinder screw M8x65 DIN 912
78	623364	Washer Ø8.4 DIN 9021 plast