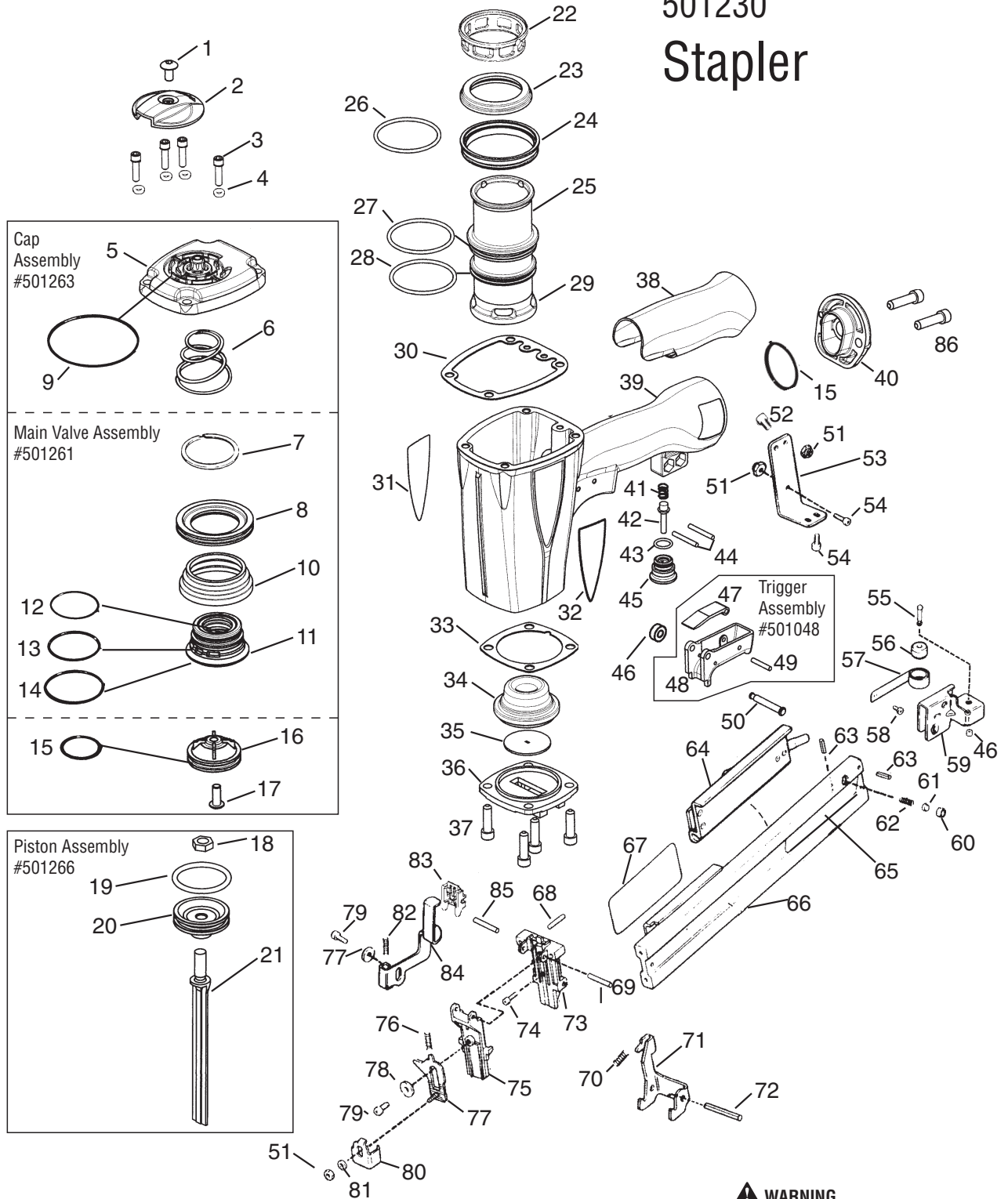


S200-S16

501230

Stapler



⚠ WARNING

All parts must be periodically inspected and replaced if worn or broken. Failure to do this can affect the tool's operation and present a safety hazard.

Ref. No.	Part No.	Qty	Description
1	501043	1	T.H.S.C.S. 1/4-20 x 1/2"
2	500956	1	Cap Diffuser
3	091362	4	S.H.C.S. 1/4-20 x 1-1/2"
4	092757	4	Flat Washer
5	501231	1	Cap
6	402717	1	Conical Spring
* 7	404230	1	Retaining Ring
8	501250	1	Upper Valve Piston
* 9	091542	1	O-Ring
10	404054	1	Seal, Main Valve
11	404056	1	Lower Valve Piston
* 12	090927	1	O-Ring, Main Valve
* 13	092775	1	O-Ring, Main Valve
* 14	092773	1	O-Ring, Main Valve
* 15	404256	2	O-Ring
16	500954	1	Post, Main Valve
17	015660	1	S.H.C.S. 10-24 x 1/2"
18	403582	1	Driver Blade Nut
* 19	405430	1	O-Ring, Piston
20	501169	1	Piston
* 21	403202	1	Driver Blade
22	501322	1	Sleeve Retainer
23	402725	1	Seal Sleeve
24	405243	1	Flange Sleeve
25	501228	1	Sleeve
* 26	402728	1	O-Ring, Sleeve
* 27	091966	1	O-Ring, Sleeve
* 28	500369	2	O-Ring, Sleeve
29	501227	1	Bumper Retainer
30	500975	1	Gasket Cap
31	501140	1	Logo Housing Left
32	501141	1	Logo Housing Right
33	402708	1	Gasket Nose Flange
34	501229	1	Bumper
35	402785	1	Seal Driver Blade
36	402706	1	Flange
37	091545	4	S.H.C.S. 1/4-20 x 7/8"
38	501023	1	Grip Handle
39	500957	1	Housing
40	500963	1	End Plug
41	097748	1	Spring Valve Pin
42	097746	1	Valve Pin
* 43	092174	1	O-Ring, Valve Body
44	026133	2	Roll Pin 1/8 x 1
45	401958	1	Valve Body

Ref. No.	Part No.	Qty	Description
46	402668	2	Retaining Washer
47	501008	1	Trigger Lever
48	501010	1	Trigger
49	501009	1	Roll Pin
50	402669	1	Trigger Pin
51	092037	4	Locknut
▲ 52	004502	2	S.H.C.S. 10-32 x 5/8"
53	402781	1	Rail Bracket
▲ 54	004224	3	S.H.C.S.10-32 x 3/8"
55	402743	1	Pin Negator Drum
56	091534	1	Drum, Negator
57	091532	1	Negator
▲ 58	091568	1	Bd. Head Screw 6-32 x 1/4"
59	402796	1	Follower
60	402797	1	Retaining Bushing
61	402798	1	Latch Follower Button
62	402799	1	Spring Follower Latch
63	402740	2	Roll Pin 3/32 x 7/16
64	402780	1	Pivot Rail Cover Assembly
65	501226	1	Nameplate
66	403427	1	Rail & Rail Cover Assembly
** 67	500459	1	Warning Label
68	404698	2	Roll Pin Assembly
69	402730	1	Pivot Pin Front Guide
70	405079	1	Spring Front Guide Latch
71	403206	1	Latch Front Guide
72	092176	1	Roll Pin 5/32 x 3/8
73	403205	1	Back Plate
74	404232	2	S.H.C.S. 8-32 x 13/16"
75	403204	1	Front Guide
76	402734	1	Spring
77	402792	1	Upper W.C.E.
78	402629	1	Hardened Washer
79	403716	2	S.H.C.S. 10-32 x 5/16"
80	403207	1	Lower W.C.E.
81	402736	1	Flat Washer
82	402738	1	Spring
83	501320	1	Guide Block
84	501243	1	Intermediate W.C.E.
85	071297	1	Roll Pin 1/8 x 1-1/8"
86	501299	2	S.H.C.S. 1/4-20 x 1"

* Denotes normal wear items.

** Make sure warning label (500459) is properly affixed. Replace if necessary. Label available at no charge through the Service Dept.

▲ Apply Loctite 242 (Blue)