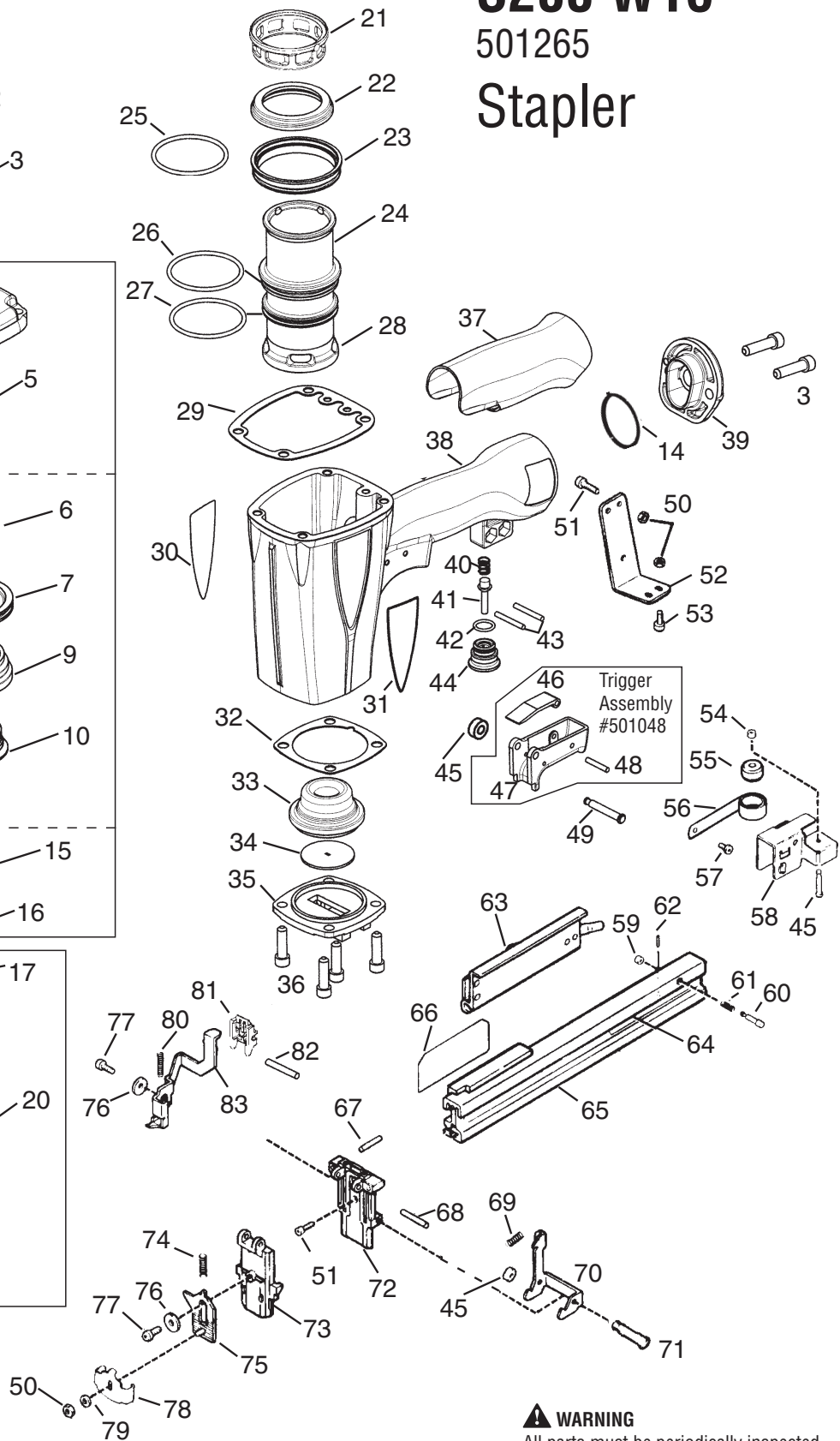
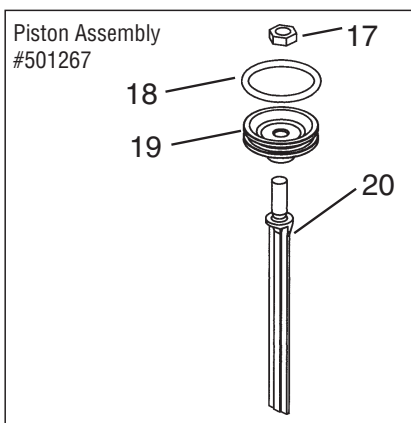
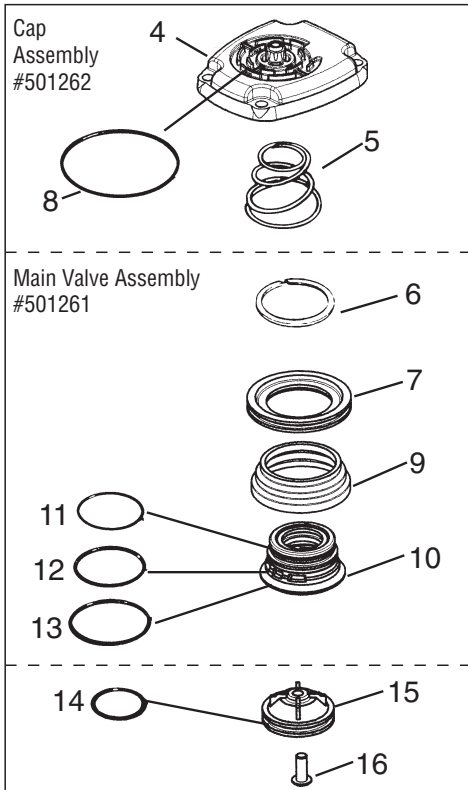


S200 W16

501265

Stapler



WARNING

All parts must be periodically inspected and replaced if worn or broken. Failure to do this can affect the tool's operation and present a safety hazard.

Ref. No.	Part No.	Qty	Description
1	501043	1	T.H.S.C.S. 1/4-20 x 1/2"
2	500956	1	Cap Diffuser
3	501299	6	S.H.C.S. 1/4-20 x 1-1/2"
4	501254	1	Cap
5	402717	1	Conical Spring
* 6	404230	1	Retaining Ring
7	501250	1	Upper Valve Piston
* 8	091452	1	O-Ring
9	404054	1	Seal, Main Valve
10	404056	1	Lower Valve Piston
11	090927	1	O-Ring, Main Valve
12	092775	1	O-Ring, Main Valve
13	092773	1	O-Ring, Main Valve
14	404256	2	O-Ring
15	500954	1	Post, Main Valve
16	015660	1	S.H.C.S. 10-24 x 1/2"
17	403582	1	Driver Blade Nut
18	405430	1	O-Ring, Piston
19	501252	1	Piston
20	404182	1	Driver Blade
21	501322	1	Sleeve Retainer
22	402725	1	Seal Sleeve
23	405243	1	Flange Sleeve
24	501251	1	Sleeve
25	402728	1	O-Ring, Sleeve
26	091966	1	O-Ring, Sleeve
27	500369	2	O-Ring, Sleeve
28	501227	1	Bumper Retainer
29	500975	1	Gasket Cap
30	501140	1	Logo Housing Left
31	501141	1	Logo Housing Right
32	402708	1	Gasket Nose Flange
33	501229	1	Bumper
34	402754	1	Seal Driver Blade
35	402706	1	Flange Nose
36	091545	4	S.H.C.S. 1/4-20 x 7/8"
37	501023	1	Grip Handle
38	500957	1	Housing
▲ 39	500963	1	End Plug
40	097748	1	Spring Valve Pin
41	097746	1	Valve Pin
42	092174	1	O-Ring, Valve Body
43	026133	2	Roll Pin 1/8 x 1
44	401958	1	Valve Body
45	402668	3	Retaining Washer
46	501008	1	Trigger Lever

Ref. No.	Part No.	Qty	Description
47	501010	1	Trigger
48	501009	1	Roll Pin
49	402669	1	Trigger Pin
50	092037	4	Locknut
51	004502	4	S.H.C.S. 10-32 x 5/8"
52	402781	1	Rail Bracket
▲ 53	004224	3	S.H.C.S.10-32 x 3/8"
54	402743	1	Pin Negator Drum
55	091534	1	Drum, Negator
56	091532	1	Negator
▲ 57	091568	1	Bd. Head Screw 6-32 x 1/4"
58	402760	1	Follower
59	402486	1	Retaining Washer
60	402758	1	Latch Follower Button
61	402759	1	Spring Follower Latch
62	402740	1	Roll Pin 3/32 x 7/16
63	402780	1	Pivot Rail Cover Assembly
64	501291	1	Nameplate
65	404849	1	Rail & Rail Cover Assembly
** 66	500459	1	Warning Label
67	404698	2	Roll Pin Assembly
68	402730	1	Pivot Pin Front Guide
69	405079	1	Spring Front Guide Latch
70	501208	1	Latch Guide
71	501209	1	Latch Pin
72	501206	1	Back Plate
73	501212	1	Front Guide
74	402734	1	Spring W.C.E.
75	402763	1	Upper W.C.E.
76	402629	2	Hardened Washer
77	403716	2	S.H.C.S. 10-32 x 5/16"
78	402608	1	Lower W.C.E.
79	402736	1	Flat Washer #10
80	402738	1	Spring
81	501320	1	Guide Block
82	071297	1	Roll Pin 1/8 x 1-1/8"
83	501244	1	Intermediate W.C.E.

* Denotes normal wear items.

** Make sure warning label (500459) is properly affixed. Replace if necessary. Label available at no charge through the Service Dept.

▲ Apply Loctite 242 (Blue)