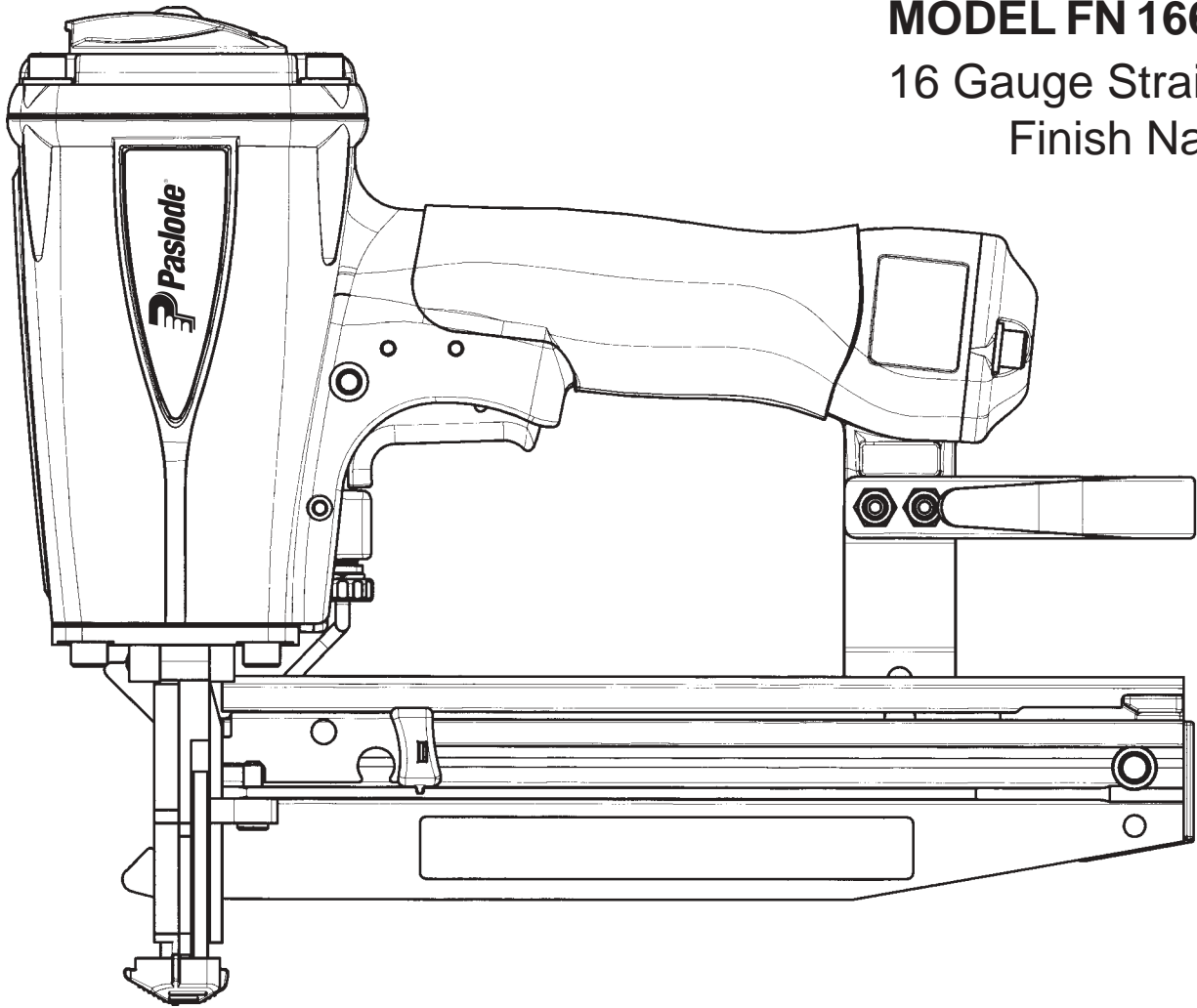




**MODEL FN 1665**  
16 Gauge Straight  
Finish Nailer



**IMPORTANT!**  
DO NOT DESTROY

It is the customer's responsibility to have all operators and service personnel read and understand this manual.

**OPERATING MANUAL AND  
SCHEMATIC**

# PARTS LEGEND

FN1665, 501880

1	501043	1	T.H.S.C.S. 1/4-20 x 1/2	44	004238	2	Lock Washer
2	500956	1	Cap Diffuser	45	004224	2	S.H.C.S. - 10-32 x 3/8
3	501299	6	S.H.C.S. 1/4-20 x 1	46	500458	1	Warning Label
5	500958	1	Cap	**47	500772	1	Spring, W.C.E.
6	402717	1	Conical Spring	*48	501143	1	Intermediate W.C.E.
7	404230	1	Retaining Ring	49	500766	1	Guide Block
8	404122	1	Upper Valve Piston	50	071297	1	Roll Pin 1/8 x 1-1/8
9	091537	1	O-Ring, Main Valve Assembly	51	500840	1	W.C.E. Assembly
*10	404054	1	Seal, Main Valve	52	404180	1	Probe Tip
11	404056	1	Lower Valve Piston	53	404698	2	Roll Pin Assembly
12	090927	1	O-Ring, Main Valve	54	402730	1	Pivot Pin, front Guide
*13	092775	1	O-Ring, Main Valve	55	403592	1	Front Guide
*14	092773	1	O-Ring, Main Valve	56	403591	1	Back Plate
*15	404256	2	O-Ring, Valve Post, End Plug	57	501023	1	Grip Handle
*16	500954	1	Post Main Valve	58	080326	2	S.H.C.S. 10-32 x 1
17	015660	1	S.H.C.S. 10-24 x 1/2	60	500963	1	End Plug
➔ 18	501498	1	Piston	61	500955	1	Belt Hook
19	405430	1	O-Ring, Piston	62	092037	4	Lock Nut 10-32
*20	401130	1	Blade Pin	63	097748	1	Spring, Valve Pin
➔ 21	501497	1	Driver Blade	64	097746	1	Valve Pin
*22	402725	1	Seal, Sleeve	65	092174	1	O-Ring, Valve Body
*23	405243	1	Flange, Sleeve	66	026133	2	Roll Pin, 1/8 x 1
24	500952	1	Sleeve	*67	401958	1	Valve Body
25	402728	1	O Ring, Sleeve	68	402668	1	Retaining Washer
*26	091966	1	O Ring, Sleeve	69	501008	1	Lever, Bump Trigger
*27	500369	1	O-Ring, Sleeve	70	501010	1	Bump Trigger
*28	500975	1	Gasket, Cap	71	501009	1	Roll Pin
*29	501140	1	Logo, Housing L	72	402669	1	Pin, Trigger
30	500957	1	Housing	73	500972	1	Rail Cover Assembly
31	501141	1	Logo, Housing R	74	403713	1	Retaining Ring
32	402708	1	Gasket, Nose Flange	75	500968	1	Rail Assembly
33	500950	1	Bumper	76	009397	2	S.H.C.S. 10-24 x 1/2
➔ *34	501404	1	Seal, Driver Blade	77	501142	1	Nameplate
*35	402706	1	Flange	78	091536	1	Spring, Follower Latch Pin
36	091545	4	S.H.C.S. 1/4-20 x 7/8	79	403711	1	Latch Pin, Follower
37	402629	1	Hardened Washer	80	094295	1	O-Ring
38	405076	1	Spring	81	403710	1	Roller, Negator
39	403716	3	S.H.C.S. 10-32 X 5/16	82	403708	1	Negator Assembly
40	403712	1	Front Guide Latch Assembly	83	403715	1	Follower Assembly
41	501133	1	Rail Bracket Assembly	84	501139	1	Follower Tab
42	401988	1	Spring, Front Guide Latch	85	500973	2	Wear Strip
43	403812	2	Flat Washer	86	501039	1	Sequential Trigger

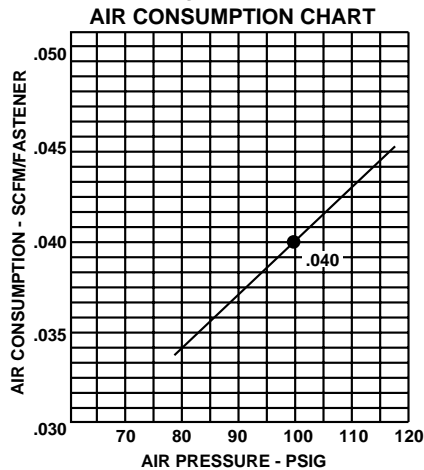
\* Denotes Normal Wear Items.

\*\* Make sure Warning Label (500458) is properly affixed. Replace if necessary.

Label available at no charge through the Service Parts Dept.

▲ Apply Loctite 242 (Blue) Part No. 093500.

➔ Denotes New Change



## SAFETY INSTRUCTIONS

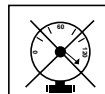
### WEAR EYE AND HEARING PROTECTION



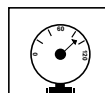
Always wear hearing protection and eye protection devices, including side shields when operating or working in the vicinity of a tool.



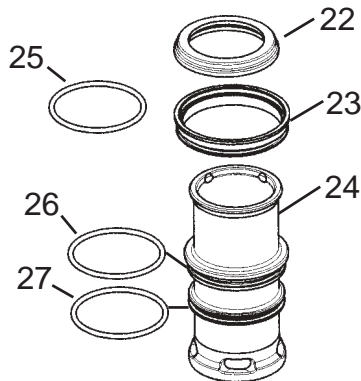
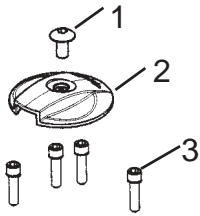
### DO NOT EXCEED MAXIMUM RECOMMENDED AIR PRESSURE



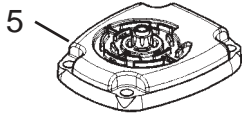
Operate the tool using only the recommended air pressure. Do not exceed the maximum air pressure marked on the tool. Be sure the air pressure gauge is operating properly and check it at least twice a day.



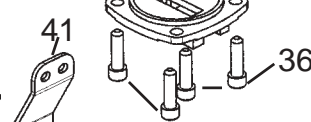
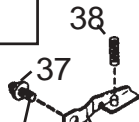
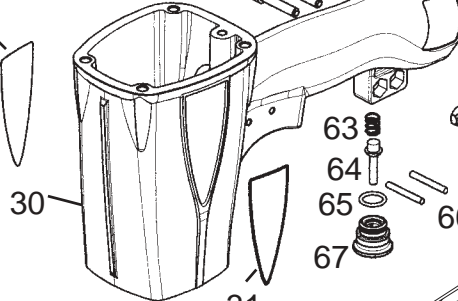
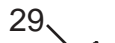
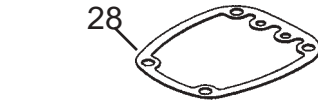
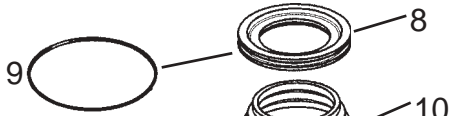
Never use any bottled air or gases such as oxygen to operate the tool since they could cause the tool to explode.



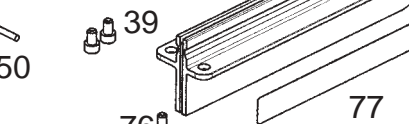
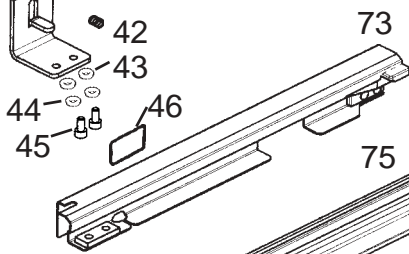
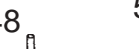
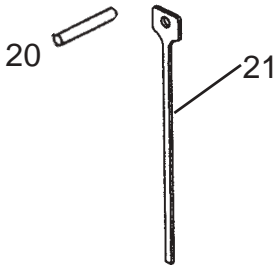
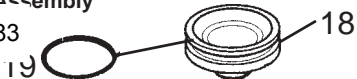
Cap Assembly #500974



Main Valve Assembly #404188



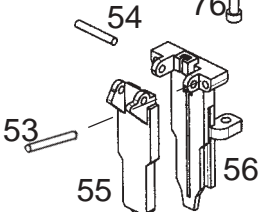
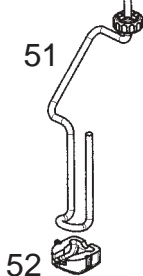
Piston Assembly #501583



**OPTIONAL:**

Bump Trigger Assembly #501048

69  
70  
71



# ACCESSORIES

## Back Plate Insert

This insert accommodates 1 1/4" and shorter finish nails.  
Also prevents nails from tumbling and jamming.

Part No. 1X1210

## Lubricants and Loctite

Loctite 242 (Bl  
Lubricating Oil



Part No.  
Part No. 300562

## Degreaser Cleaner

Ideal cleaner for all Paslode tools.



Part No. 115251

## Safety Glasses

Clear



Part No. 074020

## Tool Case

Handy carrying case that conveniently stores your tool  
with room for additional accessories.

Part No. 501152

## 3-Strip Capacity Magazine Assembly

Offers the flexibility to increase the tool's magazine  
capacity to 150 nails.

Part No. 219271



An Illinois Tool Works Company  
888 Forest Edge Drive  
Vernon Hills, Illinois 60061-3105