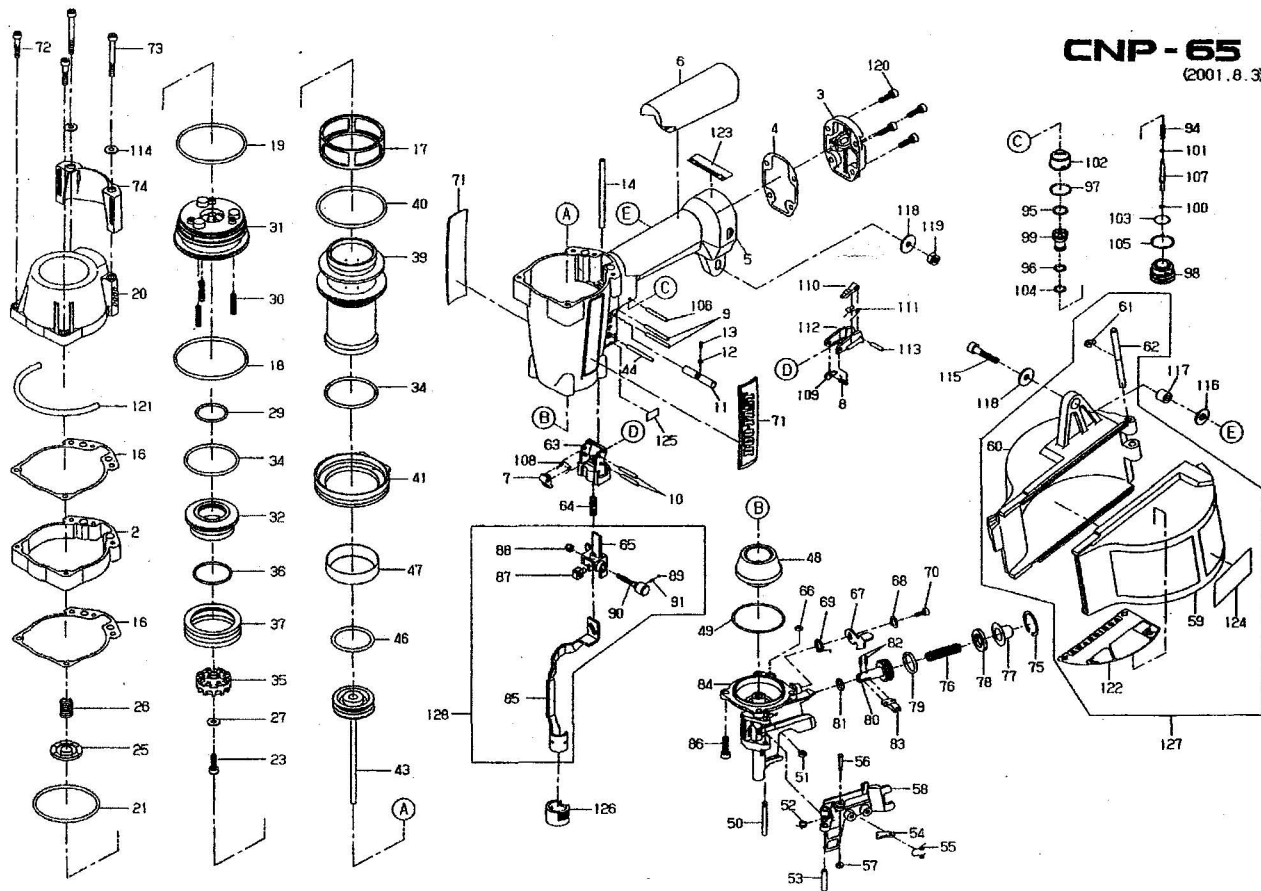


# CNP-65

(2001.8.3)



Nr	Item code	Suppl.ref	Item (descr.english)
2	313510	ME-610-6-62	POWER PACK (CNP-65Y) ME-610-6-62
3	313514	ME-110-2EX-70(	CAP_END (CNP-50,65CNW-50) ME-110-2EX-
4	392808	ME-110-6	GASKET_END CAP ME-110-6
5	615999	ME-610-1-62	BODY,MAIN CNP65 ME-610-1-62
6	392465	ME-110-50	GRIP,RUBBER ME-110-50
7	313298	ME-212-5	LEVERUPPERW.C.E. ME-212-5
8	313297	ME-112-7	SPRING,TORSION ME-112-7
9	313307	951078-5	ROLL PIN 951078-5(ME-101-1)
10	392810	268168-0	PIN,STRAIGHT 268168-0(ME-101-2)
11	313308	ME-112-4	ROD,SWITCH ME-112-4
12	313309	216024-8	BALL,STEEL 21 6024-8(ME-112-13)
13	313310	233490-4	SPRING 233490-4(ME-112-11)
14	313289	ME-110-7	PIPE ME-110-7
16	313311	ME-220-5	GASKET,CAP (KZ,CNP,CNW) ME-220-5
17	313494	ME-210-8	RETAINER,CYLINDER ME-210-8
18	313325	ME-100-4	O-RING ME-100-4
19	313322	ME-100-3	O-RING ME-100-3
20	313512	ME-120-1A-70(C	CAP (CNP-50,65,CNW-50) ME-1 20-1A-
21	313315	ME-100-2	O-RING ME-100-2
23	313288	ME-103-1	SCREW ME-103-1
25	615298	ME-120-6P1	VALVE,RETURN ASSY. ME-120-6P1
26	313312	ME-120-7	SPRING ME-120-7
27	313330	ME-106-1	WASHER ME-106-1
29	313326	ME-100-6	O-RING ME-100-6
30	313324	ME-120-8	SPRING ME-120-8
31	313535	ME-220-3AP1	CAP,CYLINDER ASSY. ME-220-3AP1
32	615399	ME-220-2A	PISTON UPPER,VALVE ME-220-2A(CNP)
34	313327	ME-100-S	O-RING ME-100-5
35	313357	ME-220-4P1	SEAL,EXHAUST ASSY. ME-220-4P1
36	310379	KDN-100-17	O-RING KDN-100-17
37	313329	ME-210-6	SEALCYLINDER ME-210-6
39	313495	ME-610-4-R2	CYLINDER (CNP-65Y) ME-610-4-R2
40	313331	JCN-100-3	O-RING JCN-100-3
41	313356	ME-110-3P1	RING ASSY.,CYLINDER ME-1 1 0-3P1
43	615294	ME-815	PISTON ASSY. (CNP-65Y) ME-815
44	313274	ME-101-3	ROLL PIN ME-101-3
46	313497	MB-100-3	O-RING MB-100-3
47	313496	ME-610-10	WASHERCYLINDER (CNP-65Y) ME-610-10
48	313343	MB-110-5	BUMPER MB-110-5
49	313344	ME-100-11	O-RING ME-100-11
50	313342	256776-9	PINGATE 256776-9(MB-140-6)
51	310580	262120-0	WASHER,URETHANE 2621 20-0(KR-106-5)
52	313339	MB-140-9	SPRING MB-140-9
53	313341	331754-1	SPACERGATE 331754-1(MB-140-7)
54	313338	345784-6	PAWL,HOLD BACK 345784-6(MB-140-4)
55	313337	233513-8	SPRING 233513-8(MB-140-3)
56	313345	268175-3	PIN,HOLD BACK PAWL 268175-3(MB-140-5)
57	313340	261118-4	WASHER,URETHANE 261118-4(KR-106-4)

Nr	Item	Suppl.ref	Item (descr.english)
58	615586	ME-840-2EX	GATE (CNP-65Y) ME-840-2EX
59		ME-830-2	MAGAZIN DOOR, SEE MAGAZIN ASSY.
60		ME-830-1	MAGAZIN, SEE MAGAZIN ASSY. ME830
61	310397	961018-5	E-RING 961018-5(KDN-104-3)
62	392454	MB-230-3	PIN,HINGE MAGAZINE MB-230-3
63	313296	ME-212-1	BASE,TRIGGER ME-212-1
64	313299	ME-140-8	SPRING ME-140-8
65		ME-347-1	UPPER YOKE, SEE SAFETY YOKE ASSY.
66	310384	KDN-100-7	O-RING KDN-100-7
67	310708	MB-141-1R4	LATCH,MAGAZINE DOOR MB-141-1
68	310431	KDN-140-9A	BUSHING,WASHER KDN-140-9A
69	313304	233491-2	SPRING,ADJUSTER KNOB 233491-2(ME-247-
70	310396	922112-8	SCREW 922112-8(KDN-103-7)
71	615455	95105516	LABEL,DUO-FAST(CNP-5065) 95105516
72	392487	ME-603-1	SCREW ME-603-1
73	392488	ME-603-2A	SCREW ME-603-2A
74	615267	ME-220-9AEX(C	DEFLECTOR,AI R ME-220-9AEX(CN P)
75	313295	962103-7	RINGRETAINING 9621 03-7(MA-104-1)
76	313293	MB-143-6	SPRING,FEED PAWL MB-143-6
77	313294	345783A8	COVER,FEEDER PISTON 345783A8(MA-143-1)
78	313364	MB-143-7	CUSHION,FEED PAWL MB-143-7
79	313292	MA-100-10	O-RING MA-100-10
80	313291	MB-143-3	PISTON,FEEDCLAW MB-143-3
81	313133	213054-0	O-RING 21 3054-0(KDN-100-10)
82	309691	403246	ROLL PIN 2,5x9 DE-101-1
83	313355	345785-4	PAWL,FEED 345785-4(MB-143-4B)
84	313504	ME-840-1AEX	NOSE (CNP-65Y) ME-840-1AEX
85		ME-847-2	LOWER YOKE SEE SAFETY YOKE ASSY.
86	313317	KT-103-2	SCREW KT-103-2
87	313301	ME-247-4A	PINADJUSTABLE ME-247-4A
88	310455	KDN-805-1	NUT KDN-805-1
89	392806	ME-247-5	BALL,STEEL ME-247-5
90	313303	ME-247-3	KNOB,ADJUSTER W.C.E. ME-247-3
94	313283	ME-113-5	SPRING ME-113-5
95	313279	213134-2	O-RING 213134-2(MB-100-10)
96	313281	213984-5	O-RING 213984-5(MB-100-14-R1)
97	310385	213275-4	O-RING 213275-4(KDN-100-8)
98	313508	ME-113-1	HOUSING,VALVETRIGGER ME-113-1
99	392807	ME-113-2C	STEM,VALVE TRIGGER ME-113-2C
100	313286	213034-6	O-RING 213034-6(ME-100-13)
101	313284	213986-1	O-RING 213986-1(ME-100-10)
102	313278	ME-113-3	COVER,VALVE TRIGGER ME-113-3
103	313287	MB-100-7	O-RING MB-100-7
104	615357	MB-100-15	O-RING MB-100-15
105	313365	ME-100-7	O-RING ME-100-7
106	071297	1013720	ROLL PIN 1/8x1 -1 /8" NSP-101-1
107	313285	ME-113-4	PINVALVETRIGGER ME-113-4
108	313276	ME-112-8	SPRING,TORSION ME-112-8

Nr	Item	Suppl.ref	Item (descr.english)
109	313277	ME-112-6C	STOPPER PLATE (MIM) ME-112-6C
110	313503	ME-212-3A	LEVER,TRIGGER ME-212-3A
111	313273	ME-112-9	SPRING,TORSIONTRIG. LEVER ME-112-9
112	313275	ME-212-2	TRIGGER ME-212-2
113	310389	951010-9	ROLL PIN 951010-9(KDN-101-4)
114	313321	ME-220-10	WASHER,GUIDE SCREW AIR DEF. ME-220-10
115	313349	KDN-203-2	SCREW KDN-203-2
116	392813	MA-106-2	WASHER MA-106-2
117	310423	KDN-130-4	SPACER KDN-130-4
118	310424	267366-3	WASHER 267366-3(KDN-130-5)
119	309052	449546	NUTLOCK 3130J
120	313353	MA-103-5	SCREW MA-103-5
121	313318	ME-100-12A	O-RINGCUSHION ME-100-12A
122		95300114	PRODUCTLABEL (KNP-103-2)
123	311400	337444	LABEL,WARNING XH-108-75
124	311385	353730	LABEL,SINGLE SEQUENCE XH-108-30
126	313502	ME-549-2	TIP,W.C.E. (CNP-50Y,65Y) ME-549-2
127	615313	ME-830	MAGAZINE ASSY. (CNP-65Y) ME-830
128	313501	ME-847AP1	W.C.E. ASSY. (CNP-65Y) ME-847AP1
			ASSEMBLYS AND PARTS NOT SHOWN ON THE DRAWING
	313305	ME-112-10	KNOB,LOCK ME-112-10
	313499	ME-112-12	BALL,STEEL ME-112-12
	313314	ME-100-1	O-RING ME-100-1
	312893	SA-140-8	SPRING SA-140-8
	615717	ME-103-7	HEX BOLT naar313333aals leegME-103-7
	313335	ME-110-9	WASHER,CYLINDER ME-110-9
	313336	213521-5	O-RING 213521-5(ME-100-9)
	392809	ME-103-2A	SCREW ME-103-2A
	615761	ME-113YP	VALVEASSEMBLY ME-113YP
	311384	353722	LABEL,STANDARD CYCLE XH-108-29